

# LUNCHEON ADDRESS ~ JOHN G. RICE

SUSTAINABLE INCLUSIVE  
GROWTH NEEDS BASIC  
INFRASTRUCTURE

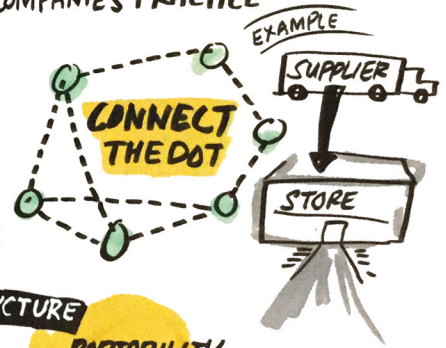
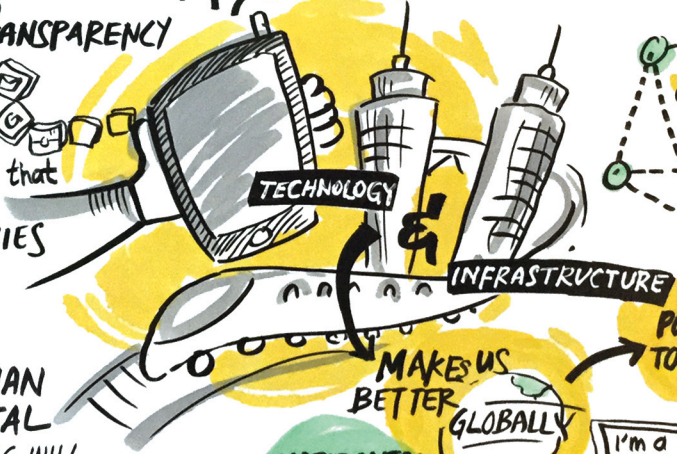


THIS IS WHAT MULTI-INDUSTRY  
COMPANIES PRACTICE

WE ALL  
ADMIT THAT SOCIAL  
MEDIA LEADS  
TO  
TRANSPARENCY

WE WILL BE  
THE INVESTORS that  
help  
COUNTRIES

HERE'S  
THE BALANCE  
SHEET...



HUMAN  
CAPITAL  
- TRAINING WILL  
ENSURE THAT COMPETENCIES  
ARE WORKED & MAINTAINED



HORIZONTAL  
& VERTICAL  
Leadership



INFLUENCE  
is BETTER than  
THE TITLE