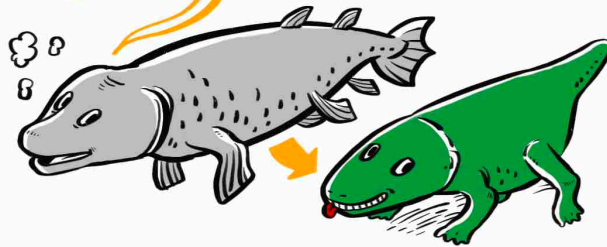


Prof Neil Shubin

ROBERT BENSLEY DISTINGUISHED SERVICE PROFESSOR at the UNIVERSITY of CHICAGO, & ASSOCIATE DEAN for ACADEMIC STRATEGY, BIOLOGICAL SCIENCE DIVISION, UNIVERSITY of CHICAGO.

# SPECIAL ADDRESS: 4 BILLION YEARS of INNOVATION in the HISTORY of LIFE

MUCH of EVOLUTION is REDEPLOYING OLD THINGS in NEW WAYS

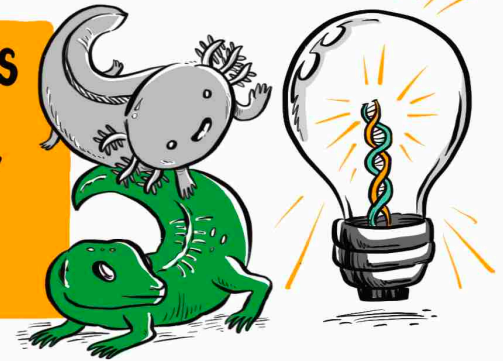


ALL the 'INVENTIONS' THAT LED to the 'INVASION of LAND' had EXISTED for EONS... THEY JUST WERE REPURPOSED



THIS was DRIVEN by the NEED to LEAVE the DANGEROUS WATERS and the OPPORTUNITY that DRY LAND PRESENTED

THESE SALAMANDERS CAN STAY as TADPOLES or CHANGE into ADULTS, DEPENDING on WHAT THE ENVIRONMENT CALLS for.



DIVERSITY BRINGS INNOVATION! ENCOURAGE EXPERIMENTS & FAILURE

DEVELOP INTERNAL SYSTEMS to INNOVATE in our CHANGING WORLD

YOU'RE NEVER TOO BIG or TOO SUCCESSFUL to GO EXTINCT.



THE MOST EVOLVABLE ENTITIES own the FUTURE