



WELCOME REMARKS & INTRODUCTION to KMF 2022



FOOD SECURITY

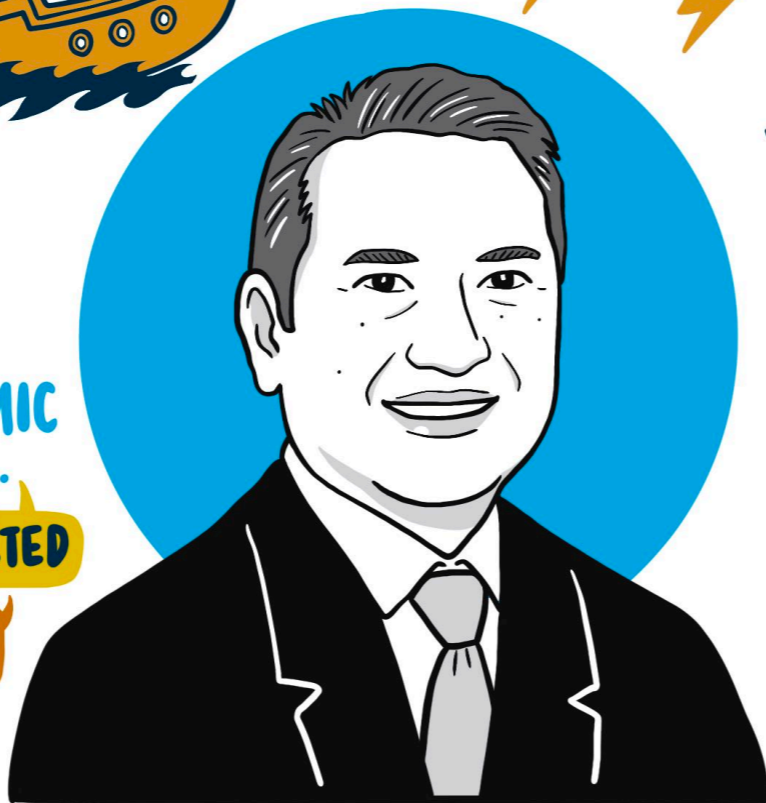
ENERGY CRISIS

GEOPOLITICAL TENSIONS

CLIMATE CHANGE

MOVING FORWARD...

KMF WILL HAVE AN **ONLINE** ELEMENT



DATO' AMIRUL FEISAL WAN ZAHIR
MANAGING DIRECTOR,
KHAZANAH NASIONAL BERHAD

TOP 6
GLOBAL
EMITTERS:

USA, EU,
CHINA, RUSSIA,
UK & JAPAN

MALAYSIA'S
GREENHOUSE
GAS CONTRIBUTION
AS of 2020... ..

0.37%



OUR SOCIO-ECONOMIC
STRUCTURE IS...

INTERCONNECTED

FRAGILE

NOT AT the EXPENSE
of the UNDERPRIVILEGED

GIVE DEVELOPING
COUNTRIES A CHANCE!



FUTURE GROWTH
MUST BE
FULLY INCLUSIVE



FAIR &
EQUITABLE
APPROACH

ONLY A
UNIFIED
WORLDWIDE
APPROACH
STANDS A
CHANCE AT
SUCCESS

