



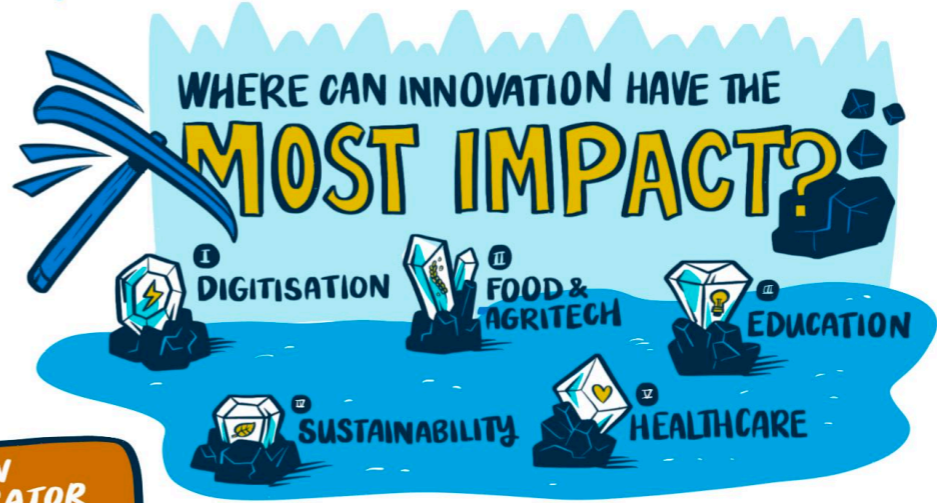
DEVELOPMENT AND ITS COMPLEXITIES
STEERING OUR WAY THROUGH A PERFECT STORM

FIRESIDE CHAT: INNOVATION ECOSYSTEM

MALAYSIA HAS POTENTIAL IN BOTH...

TALENT & PORTFOLIO

FAILURE IS GOOD FOR THE ECOSYSTEM
IT'S AN INDICATOR THAT YOUR MARKET IS MATURING!



IRONICALLY, THE EARLY STAGES IS WHERE A VC IS MOST VALUABLE TO A STARTUP...
RESOURCES, FUNDRAISING, CONNECTIONS

THE REASON WHY MALAYSIAN FOOD IS SO GOOD — **DIVERSITY** —
THE SAME SECRET SAUCE FOR INNOVATION

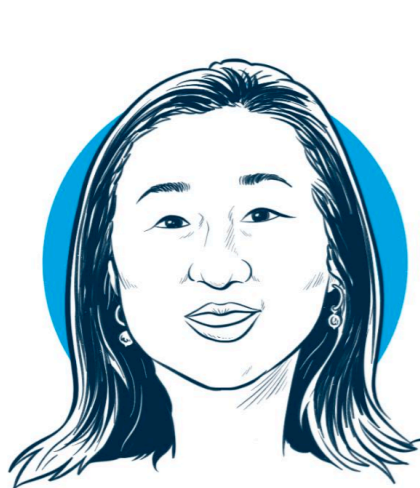
RIGHT NOW, **GROWTH PERIOD** VEN CAP IS A BLOODBATH...

CORPORATES are TENDING TO INVEST at the LATE-STAGE INSTEAD of OPTING to TAKE A LONG-TERM VIEW.

CORPORATE INNOVATION thru STARTUP ACCELERATION

CORPORATES HAVE THE RESOURCES BUT NOT THE TIME TO INNOVATE BY THEMSELVES

WARNING!
AS VEN CAP BECOMES MORE ACCESSIBLE, LESS SAVVY PEOPLE ARE INVESTING WITHOUT UNDERSTANDING THE RISK OR LONG-TERM VIEW NEEDED!



CHRISTINE TSAI
CEO and FOUNDING PARTNER
500 GLOBAL



JUPE TAN
MANAGING PARTNER ASIA PACIFIC
PLUG and PLAY



CHAIRPERSON/MODERATOR BRYAN LIM
EXECUTIVE DIRECTOR, HEAD, DANA IMPAK
and HEAD, HEALTHCARE
KHAZANAH NASIONAL BERHAD